

Lloyd Evans

MEng (Hons) CEng MICE

Associate



Lloyd has been a member of the Institute of Civil Engineers since 2013 and the Institute of Structural Engineers since 2017.

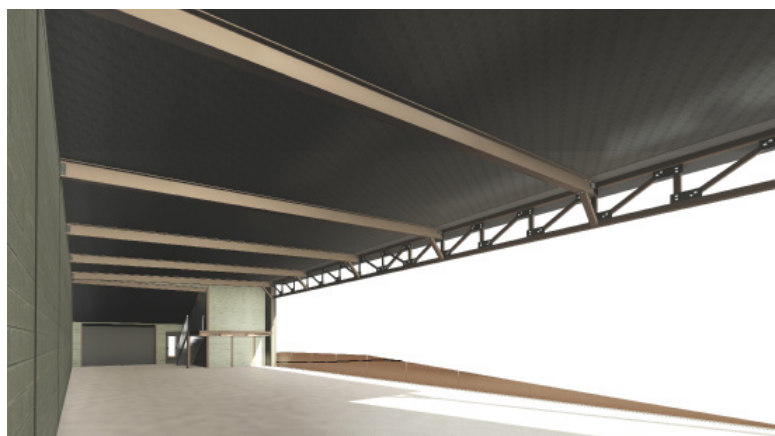
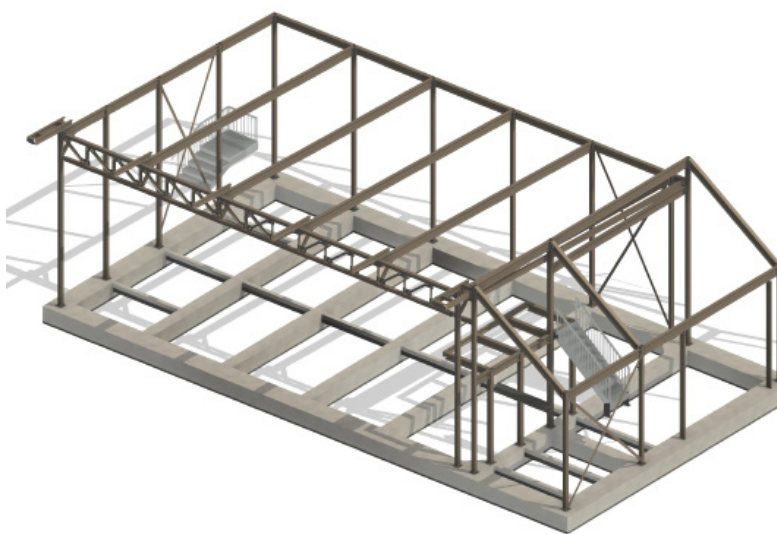
He has undertaken an array of differing design projects ranging from flood alleviation schemes, steel framed structures, renovation and remedial repair of historic buildings, new builds, risk management surveys demonstrating his wealth of experience.

Lloyd joined JPP in May 2023 and, since joining, he has been sharing his knowledge across the team by supporting and assisting in key projects as well as undertaking structural surveys and reports.

Noteable projects Lloyd has worked on are:
Bargates, Christchurch
RSPCA Stubbington Ark
Feldon Lodge School, Hemel Hempstead
Travis Perkins (various locations)

Lloyd holds a CSCS card.

T: 01202 540888
M: 07591 952816
E: lloyd.evans@jppuk.net



Scan the QR code to
find out more about
JPP.

